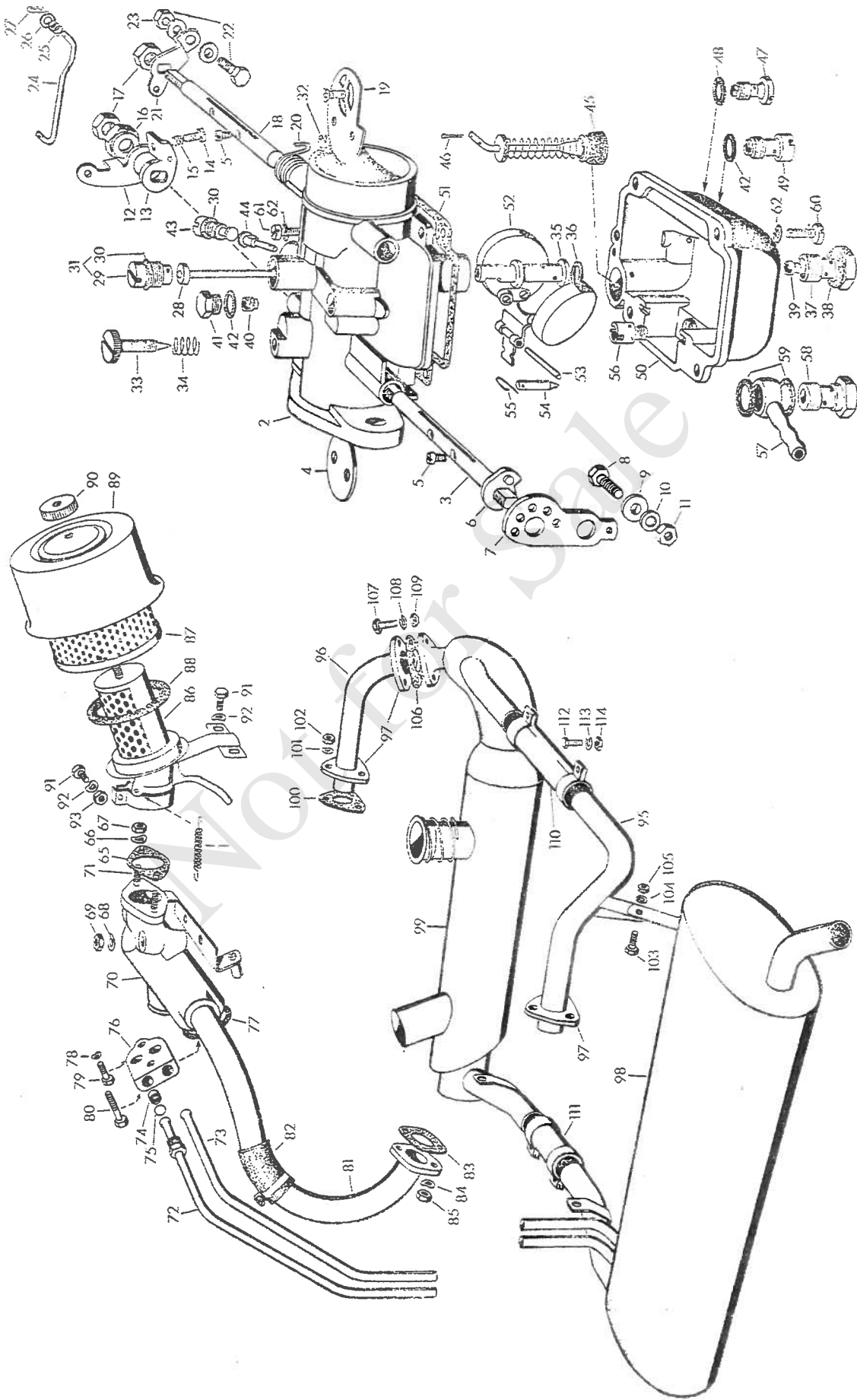


Engine / Carburettor / Air Cleaner / Exhaust System

BMW 600



Part No.	Key No.	Description	Qty.
Carburettor			
00 39 081	—	cross-draught carburettor, complete	1
00 39 810	1	return spring for throttle control	1
00 39 802	—	gas and choke cable support	1
00 39 870	2	carburettor housing	1
00 39 873	3	throttle valve shaft	1
00 39 872	4	throttle valve	1
05 39 332	5	countersunk screw for throttle and choke valve shaft	4
00 39 897	6	abutment	1
00 39 874	7	throttle lever	1
00 39 891	8	clamping screw (hex.)	1
00 39 892	9	bushing for clamping screw	1
99 31 033	10	base washer for clamping screw (5,3)	1
99 22 035	11	hex. nut M 5 for clamping screw	1
00 39 895	12	carrier arm on throttle valve shaft	1
00 39 893	13	pump arm on throttle valve shaft	1
05 39 338	14	idle speed adjusting screw	1
00 39 856	15	pressure spring for idle speed adjusting screw	1
00 39 857	16	nut for throttle valve shaft	1
05 39 342	17	hex. nut for throttle and choke valve shaft	2
00 39 876	18	choke valve shaft	1
00 39 875	19	choke valve, complete	1
00 39 889	20	torsion spring	1
00 39 899	21	choke lever	1
00 39 886	22	clamping screw, complete, for choke lever	1
99 22 028	23	hex. nut M 4 for clamping screw	1
00 39 894	24	connecting rod between choke and carrier lever	1
00 39 890	25	spring for connector rod	2
99 31 013	26	washer 3,2 for connector rod	2
00 39 896	27	lock spring for connector rod	2
00 39 879	28	idling jet	1
00 39 855	29	clamping screw for idling jet	1
00 39 888	30	seal for clamping screw and pump jet	2
00 39 869	31	clamping screw with seal	1
00 39 865	32	air pilot screw (idle speed)	1

00 = Engine / Carburettor Exhaust System

Part No.	Key No.	Description	Qty.
00 39 880	33	mixture adjustment screw (idle speed)	1
05 39 339	34	pressure spring for mixture adjustment screw	1
00 39 867	35	mixing tube	1
05 39 378	36	seal for mixing tube	1
00 39 871	37	main jet carrier	1
00 39 887	38	seal for main jet carrier	1
00 39 868	39	main jet	1
00 39 866	40	air regulating jet	1
00 39 881	41	plug screw for air regulating screw	1
05 39 380	42	seal for plug screw and pump pressure valve	2
00 39 864	43	pump jet	1
00 39 863	44	injection tube for pump jet	1
00 39 883	45	plunger, complete	1
99 45 008	46	split pin 1 X 6 for plunger	2
00 39 885	47	suction valve	1
05 39 378	48	seal for suction valve	1
00 39 884	49	pressure valve, complete	1
00 39 862	50	float chamber	1
00 39 898	51	seal for float chamber	1
00 39 858	52	double float	1
00 39 877	53	double float shaft	1
00 39 859	54	float needle	1
00 39 860	55	spring for float needle	1
00 39 878	56	float needle seat	1
00 39 861	57	annular hose piece	1
00 39 862	58	hollow screw for hose piece	1
99 63 131	59	seal A 12 X 16 for hollow screw	2
99 16 416	60	cylinder stud M 5 X 12 for float chamber	4
99 19 433	61	cylinder stud M 5 X 20 for float chamber	1
99 33 059	62	spring washer B 5 for cylinder studs	5
For carburetor to heater box			
0 39 812	65	gasket	1
9 32 091	66	spring washer B 8	2
9 22 082	67	hex. nut M 8—6 S pho.black.	2

Part No.	Key No.	Description	Qty.
For heater box and for connection with studs of crankcase			
99 32 091	68	spring washer B 8	2
99 22 082	69	hex. nut M 8—6 S pho.black.	2
Heater box			
00 39 800	70	heater box with upper part of intake pipe (casting)	1
99 03 310	71	stud M 8 X 20—5 S pho.black.	2
Heater tubes			
00 39 815	72	front heater tube	1
00 39 817	73	rear heater tube	1
00 39 834	74	intermediate tube for heater tubes to flange	2
99 63 147	75	seal C 12 X 16 steel-asbestos	2
For heater tubes to heater box			
00 39 819	76	flange	1
00 39 820	77	gasket	1
99 32 091	78	spring washer B 8	2
99 12 430	79	hex. screw M 8 X 22—8 G pho.black.	1
99 12 484	80	hex. screw M 8 X 40—8 G pho.black.	1
Intake pipe			
00 39 822	81	intake pipe, lower part left	1
00 39 824	—	intake pipe, lower part right	1
00 39 826	82	hose between upper and lower part of intake pipe	2
For lower parts of intake pipe, left and right, to cylinder head			
00 39 828	83	gasket	4
99 32 091	84	spring washer B 8	4
99 22 082	85	hex. nut M 8—6 S pho.black.	4

Part No.	Key No.	Description	Qty.
39 830	86	Carburettor air cleaner	1
43 524	87	cover with sieve	1
43 536	88	Micronic filter element	2
39 832	89	rubber seal	1
20 330	90	filter cap	1
		knurled nut M 6-5 S cad. for filter cap	1
13 457	91	For clamp to carburettor and for air cleaner connection with blower cover	3
32 071	92	hex. screw M 6x15-8 G pho.black.	3
22 054	93	spring washer B 6	1
		hex. nut M 6-6 S pho.black.	1
		Exhaust system	
91 500	95	exhaust tube, left	1
91 503	96	exhaust tube, right	1
91 535	97	flange for exhaust tubes	3
91 510	98	silencer	1
91 515	99	heater	1
		For exhaust tubes to cylinder head	
90 522	100	gasket	2
33 086	101	spring washer A 8	6
66 522	102	hex. nut	6
		For silencer to exhaust tube, left	
13 628	103	hex. screw M 8x18-8 G pho.black.	1
33 087	104	spring washer A 8	1
22 082	105	hex. nut M 8-6 S pho.black.	1

Part No.	Key No.	Description	Qty.
		For heater to exhaust tube, right	
40 90 522	106	gasket	1
99 13 643	107	hex. screw M 8x20-8 G pho.black.	3
99 33 087	108	spring washer A 8	3
99 22 082	109	hex. nut M 8-6 S pho.black.	3
		Connection pieces	
40 91 525	110	connection piece heater - exhaust tube	1
40 91 520	111	connection piece heater - silencer	1
		For clamps to connection pieces	
99 13 471	112	hex. screw M 6x18-8 G pho.black.	4
99 33 070	113	spring washer A 6	4
99 22 054	114	hex. nut M 6-6 S pho.black.	4